

# Wer will fleißige Handwerker seh'n

Melodie



Wer will fleißige Handwerker seh'n der muss zu uns Kindern geh'n

The first line of the melody is written on a single staff in G major (one sharp) and 4/4 time. It consists of eight measures. The notes are: G4 (quarter), A4 (quarter), B4 (quarter), C5 (quarter), B4-A4 (beamed eighth notes), G4 (quarter), F#4 (quarter), E4 (quarter), D4 (quarter), C4 (half).

5

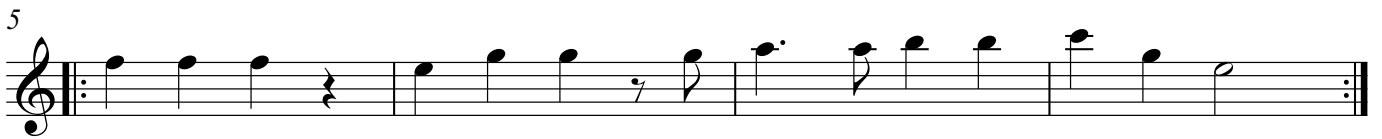
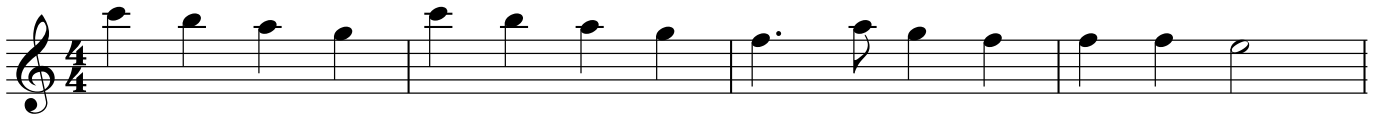


Stein auf Stein Stein auf Stein das Häuschen wird bald fertig sein

The second line of the melody is written on a single staff in G major (one sharp) and 4/4 time. It consists of five measures. The notes are: C4 (quarter), D4 (quarter), E4 (quarter), F#4 (quarter), G4 (quarter), A4 (quarter), B4 (quarter), C5 (quarter), B4-A4 (beamed eighth notes), G4 (quarter), F#4 (quarter), E4 (quarter), D4 (quarter), C4 (half).

# Wer will fleißige Handwerker seh'n

Altflöte



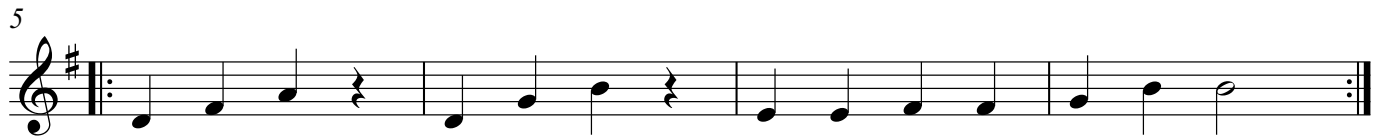
# Wer will fleißige Handwerker seh'n

Glockenspiel



# Wer will fleißige Handwerker seh'n

Xylophon



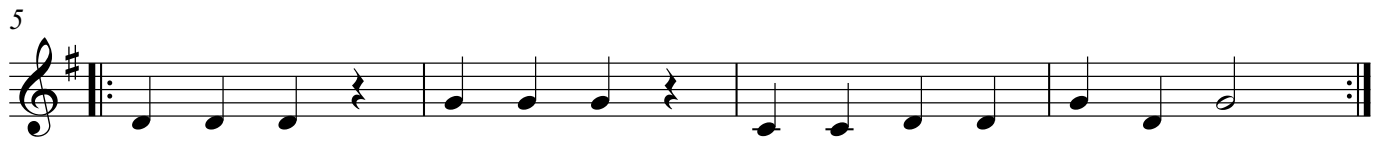
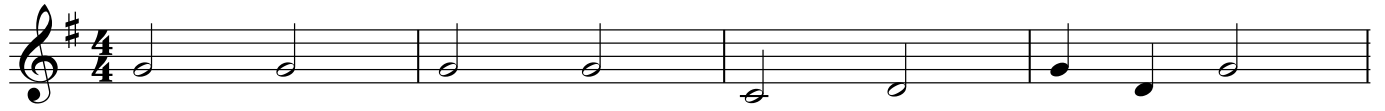
# Wer will fleißige Handwerker seh'n

Metallophon



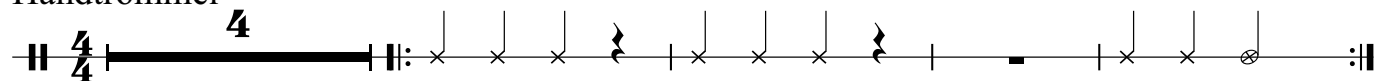
# Wer will fleißige Handwerker seh'n

Bass-Metallophon



# Wer will fleißige Handwerker seh'n

Handtrommel



# Wer will fleißige Handwerker seh'n

Großes Becken





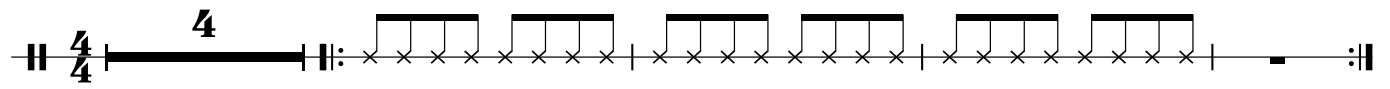
# Wer will fleißige Handwerker seh'n

Große Trommel



# Wer will fleißige Handwerker seh'n

Klangstäbe



# Wer will fleißige Handwerker seh'n

Triangel

